

**Plasma Gun Ship**  
100 MP

10/100      »0 ▶100

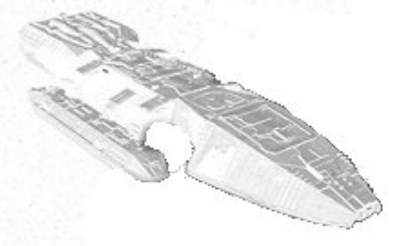


**Kills one class III - Ship**

www.spacetrace.org

**War Cruiser**  
100 MP

180/100      »180 ▶100

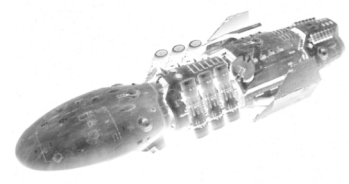


**The warcruiser deals no damage to standard cruisers.**

www.spacetrace.org

**10 Destroyer**  
80 MP

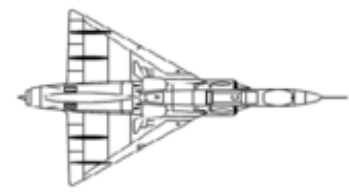
10/10      »100 ▶100



www.spacetrace.org

**100 Fighter**  
100 MP

1/1      »100 ▶100



www.spacetrace.org

**Campaign Ship**  
100 MP

0/10      »0 ▶10



**Selfdestruction, your whole class II fights again.**

www.spacetrace.org

**Flamingo**  
100 MP

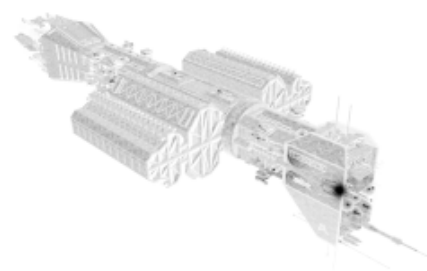
0/300      »0 ▶300



www.spacetrace.org

**Cruiser**  
60 MP

100/100      »100 ▶100



www.spacetrace.org

**50 Blockade Runner**  
100 MP

1/2      »50 ▶100



**The blockade runner can only be damaged by class 1 ships.**

www.spacetrace.org